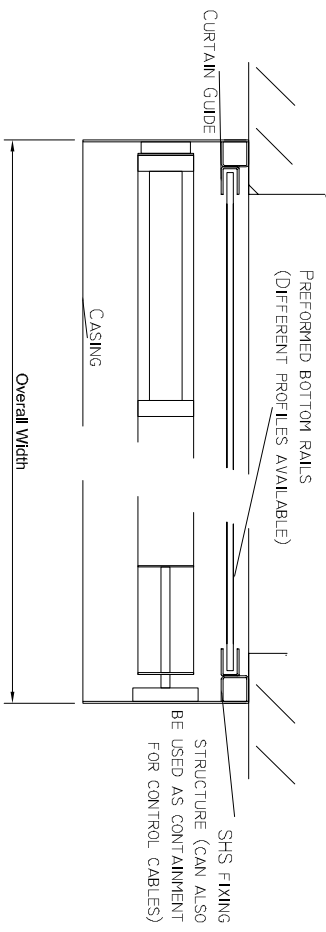


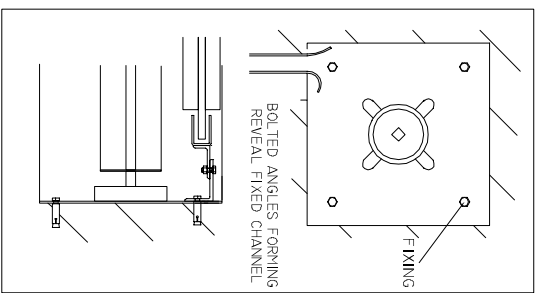
A FIX UP / FIX DOWN SCENARIO IS AVAILABLE IN SOME INSTANCES BUT ONLY AFTER FULL SITE SURVEY BY AN LBS GROUP REPRESENTATIVE AND IS ACHIEVED USING A HEAVY DUTY SQUARE SECTION STEEL.

ALL SUPPORTING STRUCTURES ARE EXISTING OR BY OTHERS. FULL WIDTH ACCESS SHOULD ALWAYS BE AVAILABLE FOR SERVICE, REPAIR OR MAINTENANCE PURPOSES. POSITION AND RATING OF SUPPLY IS DEPENDANT ON CLIENT SPECIFICS WHICH SHOULD BE RELAYED TO LBS AT EARLIEST OPPORTUNITY FOR QUOTING AND PLANNING PURPOSES. WEIGHTS ARE CALCULATED DEPENDANT ON CONFIGURATION OF DIMENSIONS.

EXISTING STRUCTURES BY OTHERS



THE DIMENSIONS ARE FOR GUIDANCE ONLY SIDEROOM CAN INCREASE DEPENDANT ON SPECIFICATIONS REQUESTED BY THE CLIENT ALSO AVAILABLE UTILISING OUT BOARD MOTORS.



Clearlink is a polycarbon clear panel providing 70% visibility individually joint using $\frac{3}{16}$ 10 gauge anodised aluminium tube. Providing security in areas where mild steels are susceptible to corrosion.

Fixing Guidance	Fixing
Steel	M6-M10 Set screws or Hex bolts
Masonry	M6-M10 Rawibolts/ Sleeves
Timber	12swg screws / M6-M10 Coach screws
Concrete	12swg screws / M6-M10 Rawibolts or Sleeve anchors

Headroom Guidance	Endplate Height (ordinary coil)
<1000	280
1000-2000	380
2000-3000	420
3000-4000	460
4000-4500	460

THE ABOVE DIMENSIONS ARE IN MILLIMETERS AND ARE THE MINIMUM AVAILABLE. REVERSE COILING THE CURTAIN WILL INCREASE THE HEADROOM REQUIRED. CORRECTLY UP TO 4.5' WIDE.

The above guidance dimensions are subject to site surveys carried out by an LBS Group representative in conjunction with the correct specifications supplied by our client.

PRODUCT: LBS CLEARLINK

DATE: 12.12.2019

DRAWN BY: JS

LBS GROUP
UNIT 6 STERLING
INDUSTRIAL ESTATE
RAINHAM ROAD

LBS GROUP GENERIC DRAWINGS

REVISION No: 1A
DRAWING No: LBS005

Approved:

SOUTH
DAGENHAM
ESSEX
RM10 8TX

