

# LBS VISTA GRILLE.

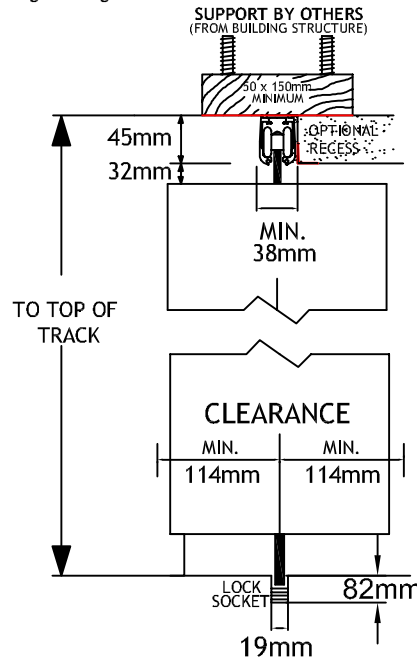
The LBS VISTA GRILLE is a retractable aluminium partition providing lightweight stylish security and visibility. The range consists of Glazed, Perforated and Tube/Link Grille sections.

Supports of Concrete, Wood or Steel will always be by others ensuring that track fastenings are a minimum of #10 Screws spaced 305mm over the span of the door and 150mm where the door will stack (e.g in the pocket)

Unless otherwise shown all curves will be 90° or 45°. LBS are able to provide custom curves with a minimum radius of 1220mm. In the case of custom curves a accurate detail must be provided.

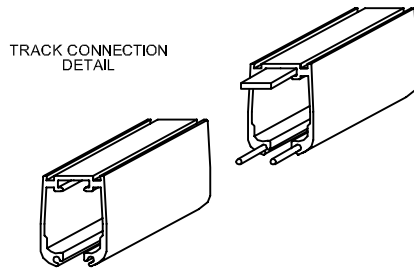
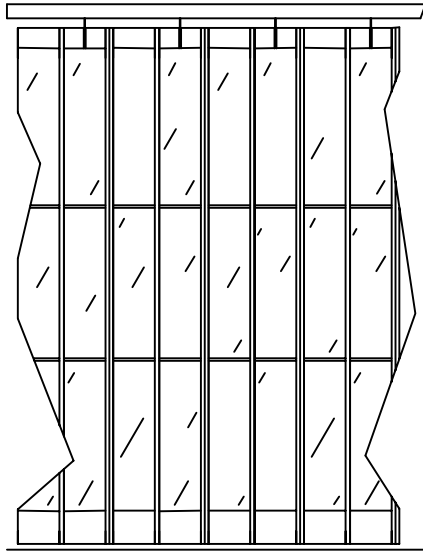
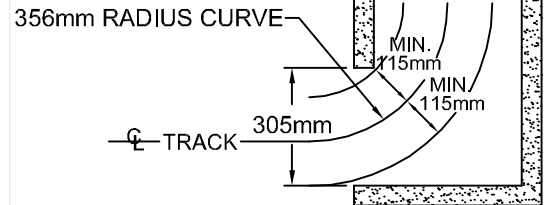
## SECTION:

The grille support should be able to carry the weight of a FULLY STACKED door at any point along it's length.

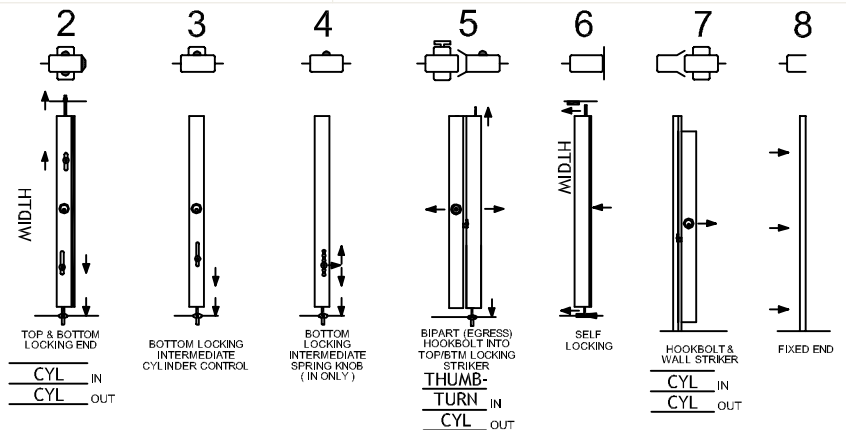


## POCKET

MINIMUM STACKING  
88mm/m OF OPENING  
PLUS 90mm PER POST  
OR ROUGHLY  
167mm/m OF OPENING



WEIGHTS	
MODEL	KG/M <sup>2</sup>
GLASS VISTA	3.7
PERFORATED VISTA	3
CLASSIC	1.2



## SAMPLE LAYOUTS

